

The ASCELA logo is displayed in a large, bold, black sans-serif font. A small red square is positioned at the bottom right corner of the letter 'A'.

ASCELA

Design & Build

The background of the page is a photograph of a modern dining room. It features a wooden dining table, light-colored upholstered chairs with dark legs, a large abstract painting on the wall, a chandelier with multiple reflective spheres, and a round mirror with a decorative border. A pink rectangular overlay is placed over the middle of the image, containing the main title and a paragraph of text.

Interior Design Trends 2021- Residential

With the jinxed year of 2020 finally past us, its time to rejoice and look out for the interior design trends that will take over this year.

ASCELA Design & Build Insights | Edition 8 | January 2021

The pandemic forced us to reimagine the spaces we were used to living in, especially our homes. Whether that called for creating a functional home office, designing a living room for Zoom and remote learning, or pinpointing a smart pantry organizing solution, just about every area of a home likely required a refresh.

Let's explore what 2021 has in store for the interior design of residences.

INTRODUCTION	3
DESIGN TRENDS	3
Materials	3
Colors	3
Fabrics	4
Statement Pieces	4
Indoor Plants	5
Decorative Smart Lighting	5
ASCELA'S CONTRIBUTION	6



Contributors

Nitin Srivastawa

Director- Design and Build
ASCELA

nitin.srivastawa@ascelaadvisors.com

Nitin Srivastawa is an Architect/ Project Management professional with more than 12 years of experience in design and build services with specialisation in stadium design and hospitality.

Roli Rai

Architect- Design and Build
ASCELA

roli.raai@ascelaadvisors.com

Roli Rai is an Architect with experience in architecture and interior along with knowledge of design and build services and bespoke furniture.

Introduction

As interior design increasingly becomes a subject of interest among architects and designers, we will explore some of the interior design schemes that will rule the beginning of this decade.

- **Materials:** People are regaining a sense of individualism by using, dark floral patterns and stained woods in their homes. It stands to reason that in 2021, we want to elevate our homes with dramatic touches of luxury. The ultra-glamorous trend brings a luxurious jolt to the home. Consider how playful opulence and patterns lift an interior's mood and why this has become so important for this new decade. It's a feeling of sumptuous that redefines the home with all the comforts and refinements of boutique hotels.

One of our recently completed residences in Chandigarh



- **Colours:** Color is set to bring new energy to interiors in 2021 – providing a much-needed sense of relief and escapism in these trying times. This year, Pantone took the unusual step of naming two colors as their shades of the year: Illuminating, a zingy yellow, and Ultimate Yellow, a pale gray. 'The selection of two independent colors highlight how different elements come together to express a message of strength and hopefulness that is both enduring and uplifting'- says Leatrice Eiseman, Executive Director of the Pantone Color Institute.



- **Fabric:** The 2021 fabric trends sees an abundance of colorful blooms in the form of beautiful, smaller scale contemporary florals. Bold, dramatic blooms are perfect for those looking to make a statement; by utilising a floral motif in a darker palette throughout one's upholstery. Muted earthy yellow ochre – a pigment used since prehistoric times – contrasts beautifully with neutral charcoals and greys and works with blond wood for an alluring mid-century vibe.



- **Statement pieces:** This design trend will be proper to elevate any division, for a more sophisticated room. Clear spaces are becoming more desirable for decor enthusiasts. Statement artwork has the potential to usurp everything else in the room, be it an over-large painting, a heritage sculpture or even a bold piece of furniture.

One of our recently completed residences in Chandigarh



- **Indoor Plants:** Indoor plants have become a completely new layer in interior design projects. The use of reclaimed wood, hanging plants, green walls and large green installations are some of the main trends that we are seeing and that will shape interior design in the next decade.

One of our recently completed residences in Chandigarh

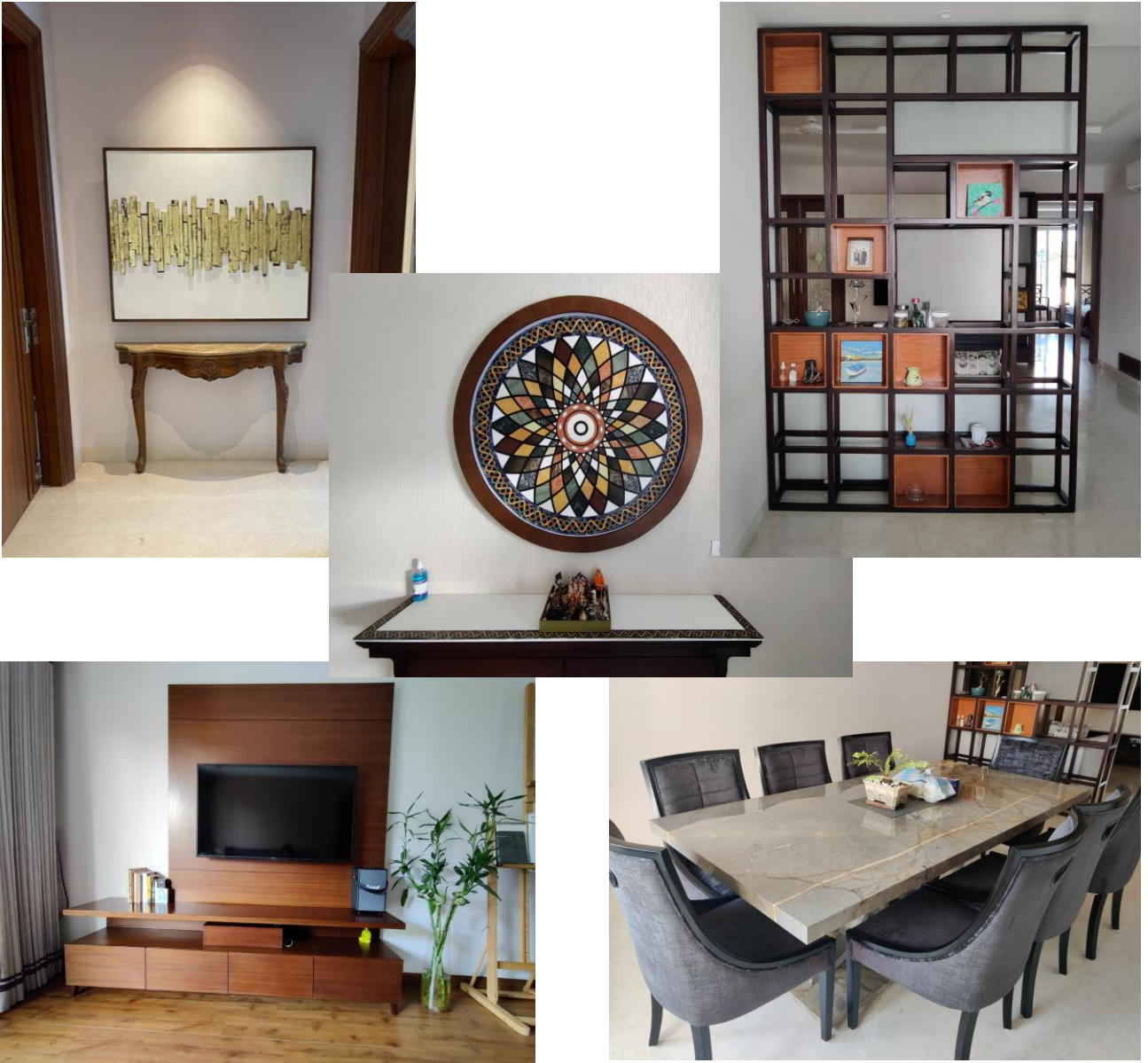


- **Decorative Smart Lighting:** As we head into the new year, people will look for ways to make their home a comfortable and functional living space. For instance, swapping out regular incandescent bulbs for smart lighting options allow you to set schedules and create an ambiance to fit your needs – whether that's Zoom school, cooking prep for a family gathering, or just relaxing in the living room.

One of our recently completed residences in Chandigarh



ASCELA recently completed the interior design and execution of a luxury residence located in a prime location in the city of Chandigarh. The design brief from the client specified converting their basement into a guest attending zone which included a private home theatre space-cum living room, a contemporary bar, a formal living area and an artist studio. The scope of work also included customizing furniture for their ground floor bedrooms, living and dining room. Our team of experts provided customized end-to-end solutions for the spaces based on the client's requirements.



Write to us –

Nitin Srivastawa

Director, Design and Build, ASCELA
nitin.srivastawa@ascelaadvisors.com

Roli Rai

Architect, Design and Build, ASCELA
roli.raai@ascelaadvisors.com



About ASCELA

ASCELA is a Management Consulting firm established to provide independent strategic insights to organizations and individuals in Infrastructure development space. We assist our clients in anticipating, innovating, and creating sustainable solutions.

ASCELA was established with a vision to provide independent strategic insights in Infrastructure and build environment. ASCELA's founder members have rich multi-sectorial experience, including skill sets in sectors comprising Infrastructure, transportation, management, economics, and design and build solutions. Our combined knowledge assists clients in providing a holistic perspective and comprehensive business solution.

ASCELA is registered in India as ASCELA ADVISORS PRIVATE LIMITED (CIN- U74999HR2018PTC072828). ASCELA is also recognised by the Department for Promotion of Industry and Internal Trade (erstwhile DIPP), Ministry of Commerce and Industry, Government of India, under Startup India initiative (Recognition ID - DIPP17959).

About ASCELA Design & Build

ASCELA is a professional service company that offers general contracting and interior fit out services through its Design & Build practice, and is specialised in retail, hospitality, commercial, government, corporate multifamily, and restaurant fitouts. Our team comprising of Architects/ interior designers/ site engineers help customize design & build solutions depending on client's needs and requirements. Our quest for excellence is achieved by its innovative engineering and quality execution of the projects, on time, within budget, by its high-performance team which is adaptable to each project.

© 2020 ASCELA ADVISORS PRIVATE LIMITED.

All Rights Reserved.

This publication contains information which is intended for general guidance only. It is not intended to be a substitute for detailed research or the exercise of professional judgment. ASCELA cannot accept any responsibility for loss occasioned to any person acting or refraining from action as a result of any material in this publication. On any specific matter, reference should be made to the appropriate advisor.